



Frederick Steel

SUPPLY CHAIN SOLUTIONS

The

FICEP Angle Line

a Frederick Steel Solution

Angle capacity based upon:

A36 material: Min 1 1/2" x 1 1/2" x 3/16"

Max 6" x 6" x 3/4"

Flats: Min 2" x 3/16"

Max 6 3/8" x 3/4"

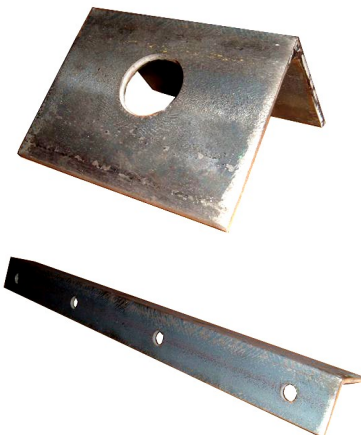
Channels: Min 3 1/8"

Max 6 3/8"

Max bar length is 40'

Max tool size X thickness:

A36 material: 1 1/4" x 3/4"



Punch Station Specs

- 2 punch stations for each angle leg
- Capacity: 88 tons
- Throat depth: 6"
- Stroke: 1 3/4"
- Max tool size with standard tooling: 1 1/4"
- Max thickness: 3/4"
- Gauge line stroke with respect to the inside of the angle leg: Min + 3/8" / Max + 5 11/16"



| Gauge Line Limitations with Standard Tool Holders | |
|--|------------------------------------|
| Angle Size Range | Minimum Gauge |
| 1 ¼" to 2" | 0.63" plus the angle leg thickness |
| 2 ¾" to 4" | 1.04" plus the angle leg thickness |
| 4" to 6" | 1.20" plus the angle leg thickness |

- The marking unit is suitable to mark one leg of the angle. The marking unit is fitted with a disc holder for characters whose rotation is CNC controlled by means of a servomotor.
- The marking cycle is automatically selected by the CNC program and synchronized with movement of the angle through the line to accommodate the required part marking.
 - 38 marking stations
 - Letter/number dimension is 5/8" X 5/16"
 - 8.8 tons marking strength on every character

For additional details call Frederick Steel today!

Notes:

